

Meat Slicer



We have knives, sharpeners, pushers, grips, and many more parts for Hobart Slicers.

This image is only for reference and not affiliated with manufacture.



Turkey



Flank Steak

Meat Slicers

TOP-MOUNT SHARPENER

Sharpen and hone the 13" CleanCut™ Knife in just 15 seconds! Easily remove the sharpener for quick clean up.

TILT & REMOVABLE CARRIAGE

Reduce cleaning time with the removable carriage that can be washed in the sink.

BURNISHED ALUMINUM BASE

The single-piece design is corrosion-resistant and durable.

AUTOMATIC SLICER

Choose from 4 stroke speeds and 3 stroke lengths to handle a wide range of products.

POWERFUL MOTOR

The 1/2 HP motor is strong enough to slice cheese and shred meat.

REMOVABLE PARTS

- Sharpener
- Carriage
- Product Deflector
- Meat Grip
- Product Tray
- Ring Guard

STATIONARY PARTS

- On/Off Switch
- Gauge Plate
- Product Tray Knob
- Index Knob



Spec Sheet

STANDARD FEATURES

- MICROBAN® Antimicrobial Product Protection
- Exclusive Tilting, Removable Carriage System
- CleanCut™ Knife
- Top Mounted Borazon Stone Sharpener
- Hobart Poly V-Belt Drive System
- Sanitary Burnished Aluminum Base
- Double-Action Indexing Cam
- Permanently Mounted Ring Guard
- Heavy Gauge Stainless Steel Knife Cover
- Cleaning Leg
- Removable Rear Deflector
- ½ H.P. Knife Drive Motor
- Nylon Carriage Roller
- Electroless Nickel Plated Single Slide Rod with Reservoir Wick
- Stainless Steel Carriage
- Ergonomic Style Handle

ACCESSORIES

- ☐ Low Fence
 - ☐ High Fence
 - ☐ Food Chute
 - ☐ Heavy Meat Grip with Clips
 - ☐ 4" Legs
 - ☐ Product Tray
-

MODEL

- ☐ 2612 – Basic Manual Slicer with the Works
 - ☐ 2612C – Basic Manual Slicer with Maximum Security Correctional Package (120/60/1 only)
-



Carriage Tray Assembly

Slide Rod & Knob Assy

Meat Grip Assembly

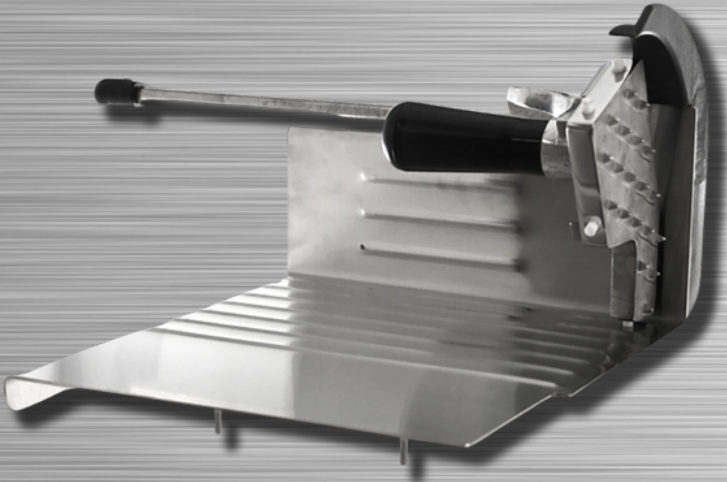
Meat Grip Handle

Carriage Tray

The Meat Slicer carriage tray is a versatile accessory designed to enhance the functionality of your meat slicer.

Carriage and Meat Tray Assembly

HS303A



HS310A



HS133A



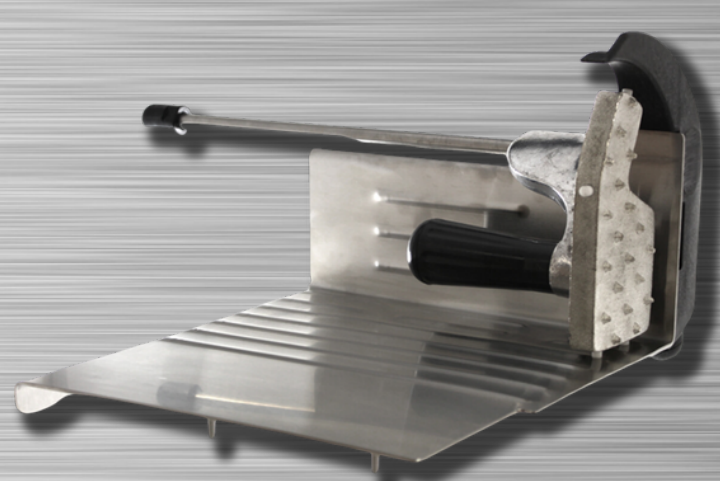
HS132A



HS301A



HS302A



Meat Grip Assembly

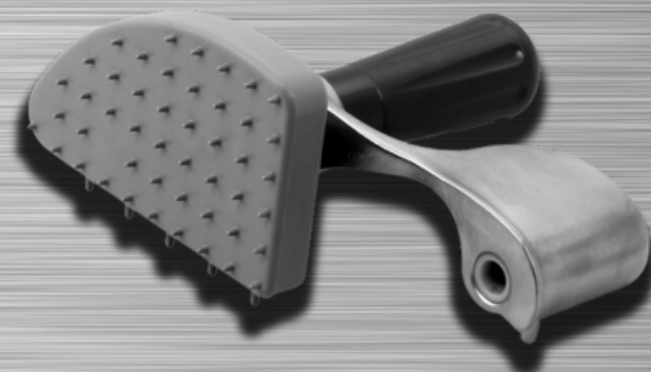
HS81A



HS82A



HS145A



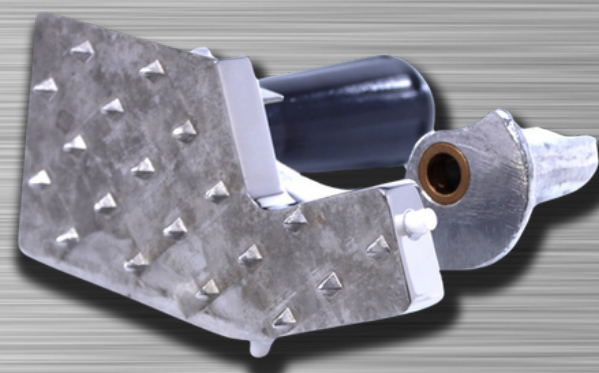
HS295A



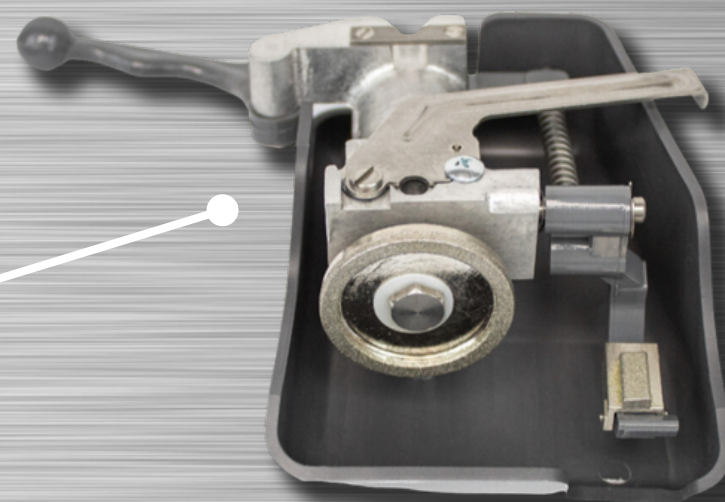
HS297A



HS299A



Sharpener



**sharpening and
Truing Stone**



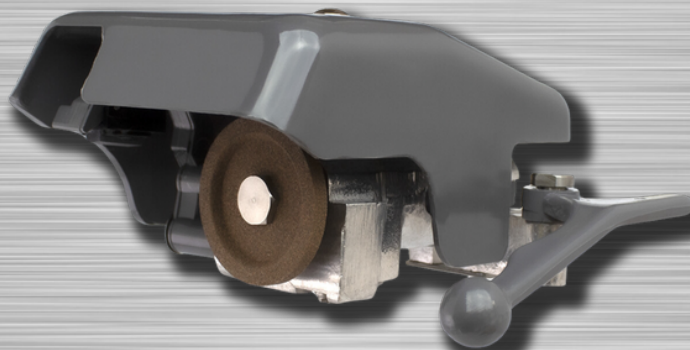
**View More?
[Click here](#)**

Sharpeners

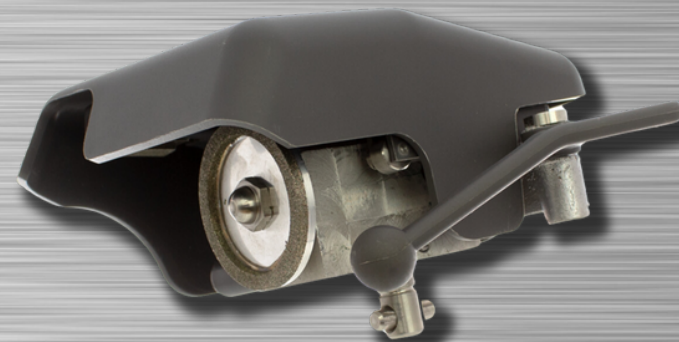
HS101A



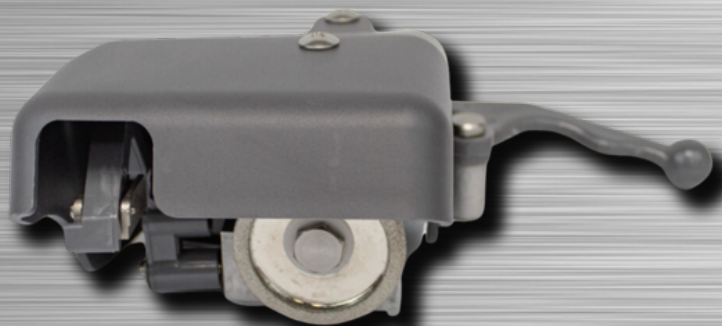
HS256A



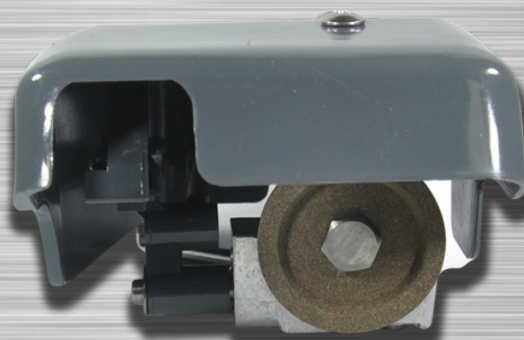
HS309A



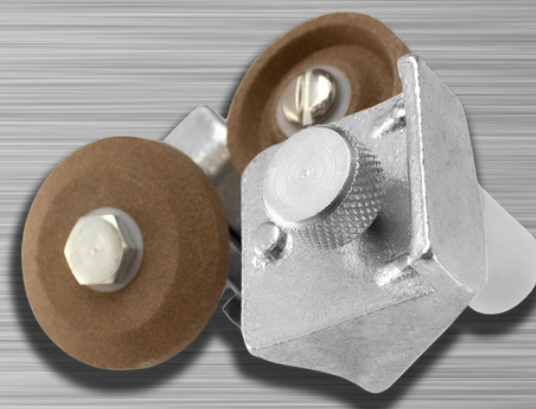
HS257A



HS286A



HS76A



Slicer Knife

View More?
Click here



The above described parts are manufactured and/or supplied by National Band Saw Company as replacement parts for equipment. National Band Saw is not affiliated with any original equipment or parts manufacturers.



Remove the top knife cover



Clean knife with moistened paper towel

What Does A Meat Slicer Do?

Steaks



Ham



Turkey



The meat slicer is a versatile kitchen tool designed for safety and functionality, enhancing efficiency and productivity in food preparation. It can continuously cut cheese and meat, with features that simplify the cleaning process at the end of the day. Equipped with a zero-exposure knife design, innovative interlocks, and a no volt release system, this slicer prioritizes safety by reducing the risk of accidents. The slicer can slice foods up to 1" thick, with an adjustment knob for easy slice size selection and a double action indexing cam for precise slicing. Its carriage can accommodate foods up to 12" wide by 7 1/2" high, allowing for slicing of various items from large hams to salami and pepperoni. Additionally, the slicer features a top-mounted borazon stone sharpener that hones and sharpens the blade in as little as 5 seconds, ensuring optimal cutting performance.

